



Point Manager add point sort function

Joe 2017.11.23 V1.0

Translated by Joe 2018.1.19 V1.0

簡述

➤ Purpose

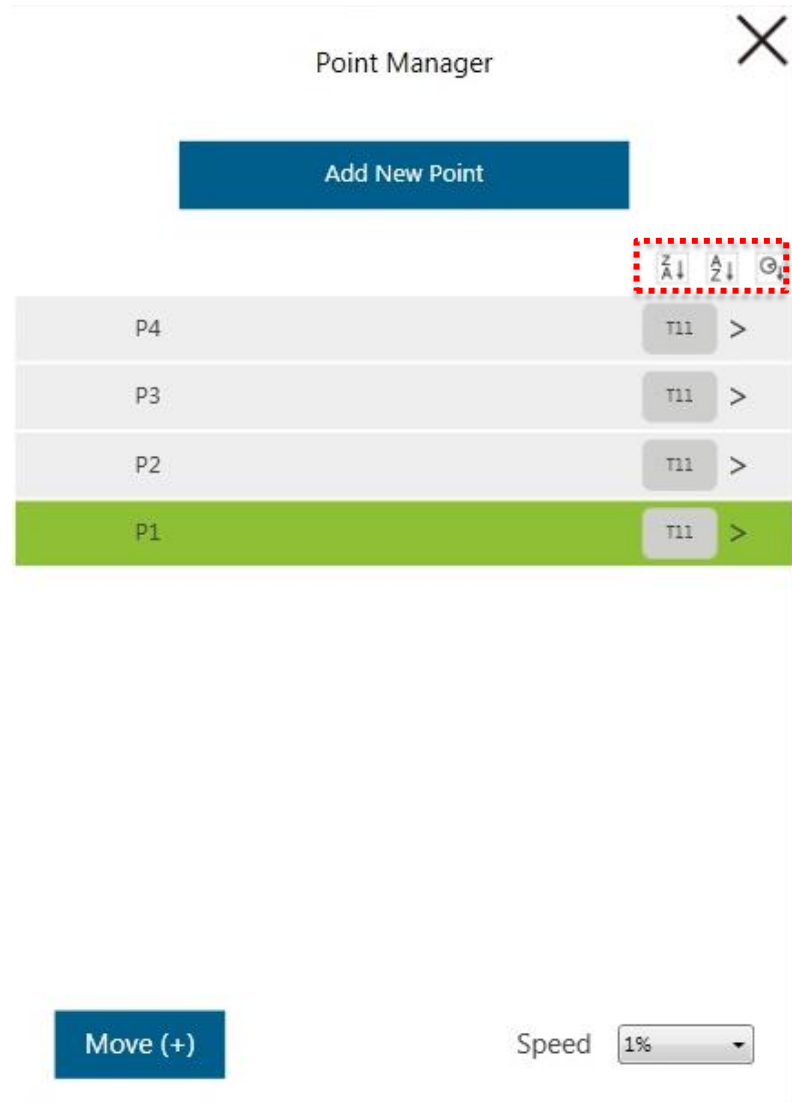
1. Point manager

Add point sorting options

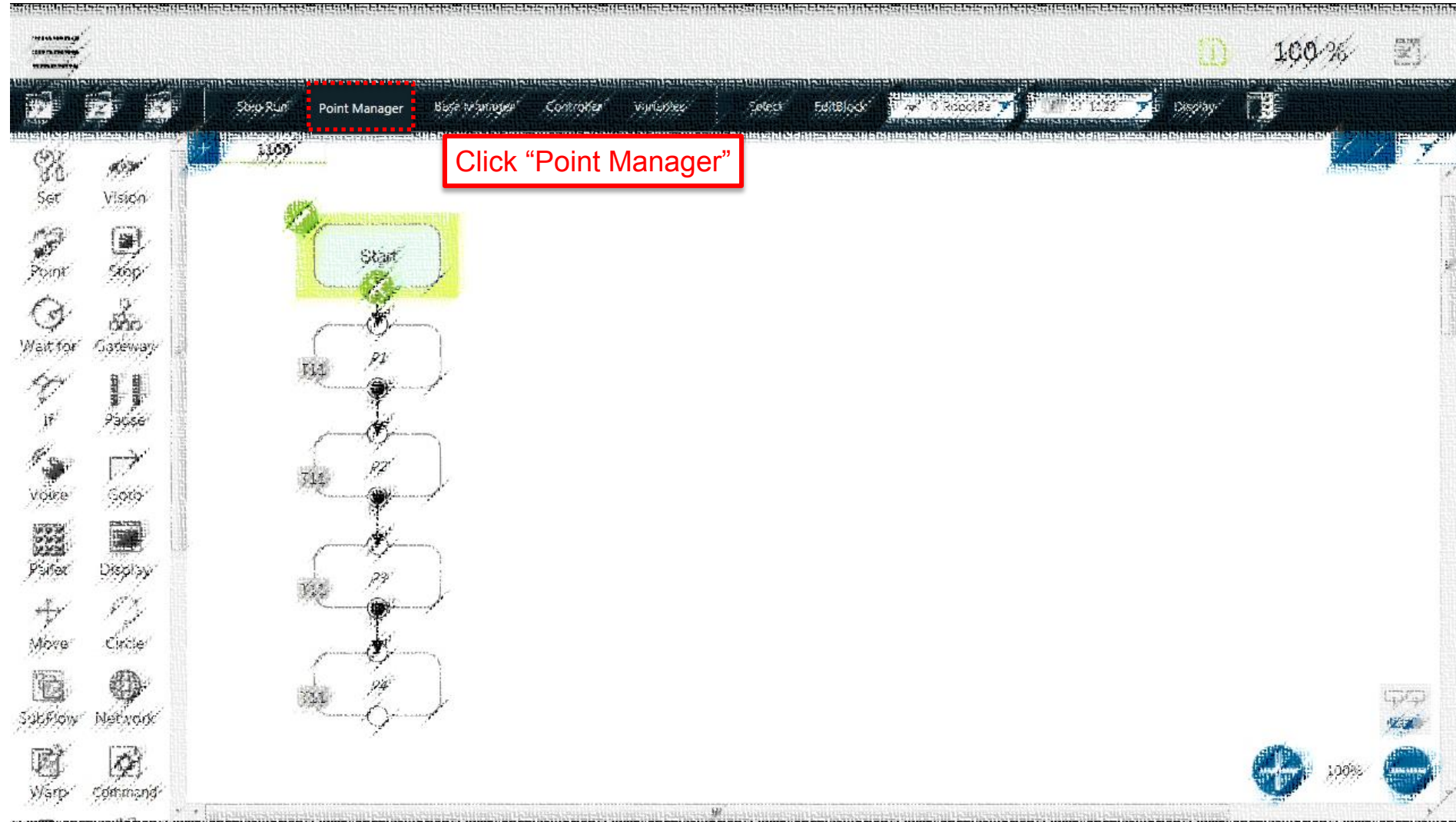
➤ Equipment

1. TM5

➤ Application introduce



HMI介面 - 點位管理員



點位管理員

Point Manager

Add New Point

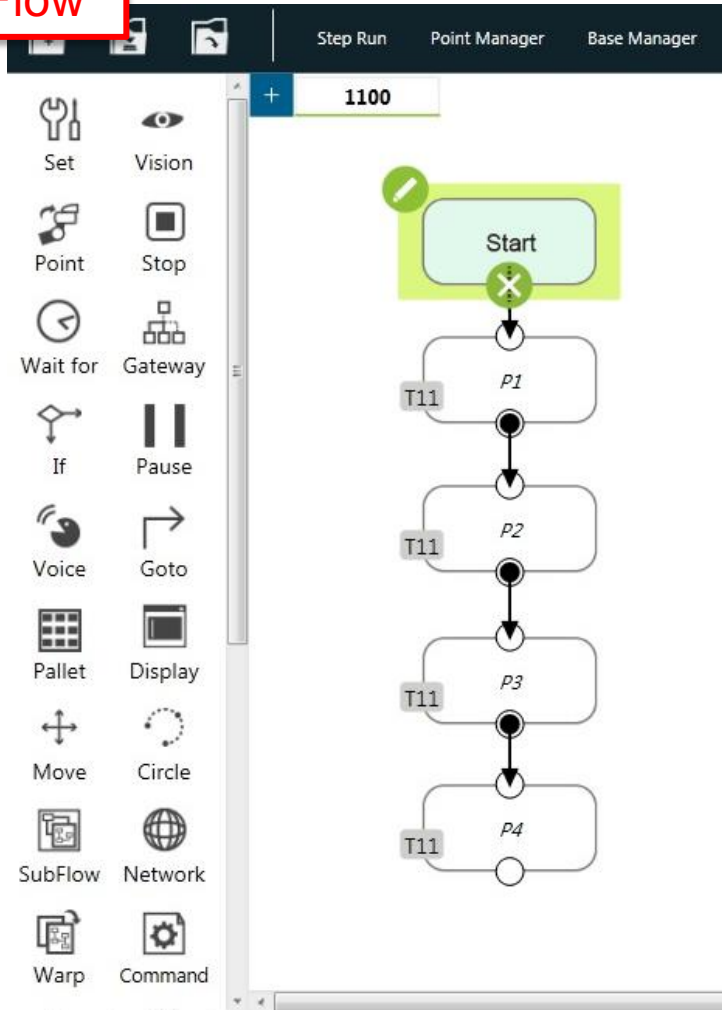
Z A ↓ A Z ↓ G ↓


1. Z A ↓ : Sort by order according to name.
2. A Z ↓ : Sort by reverse order according to name.
3. G ↓ : Sort by order according to founded time.

Move (+) Speed 1%

點位管理員

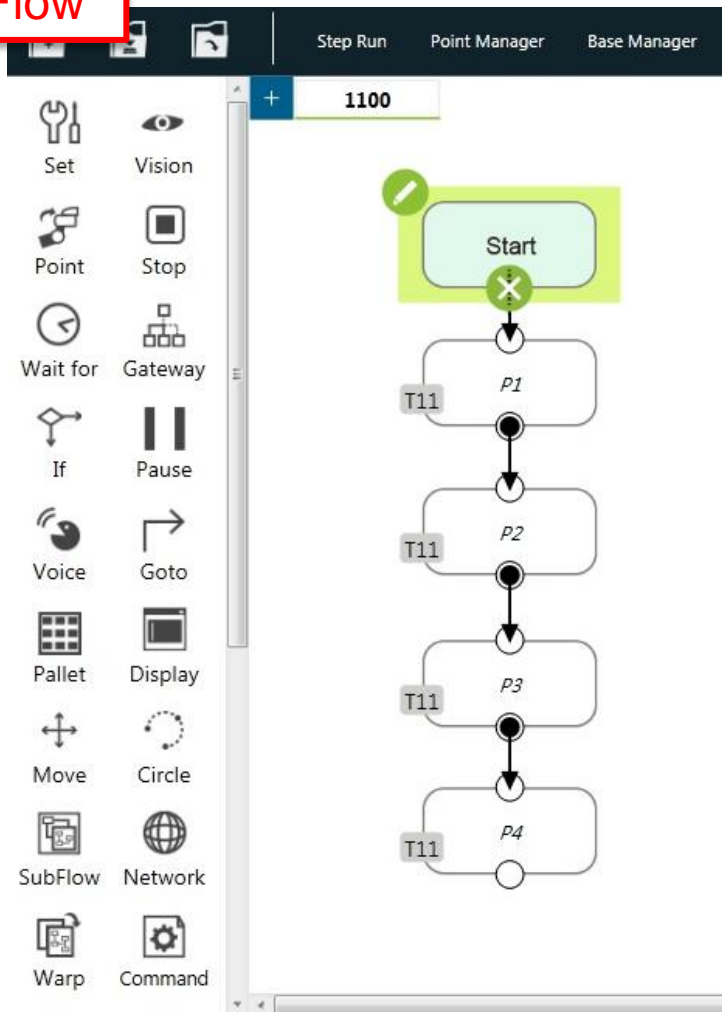
Flow



The 'Point Manager' dialog box is shown. It has a title bar with a close button (X). Below the title bar is an 'Add New Point' button. A list of points is displayed, with 'P4', 'P3', 'P2', and 'P1' listed vertically. To the right of each point name is 'T11' and a right-pointing arrow. A red dashed box highlights the 'Z A ↓' icon in the top right corner of the list. A red callout box points to this icon with the text: 'Click  points will sort by order according to name'. At the bottom of the dialog, there is a 'Move (+)' button and a 'Speed' dropdown menu set to '1%'.

點位管理員

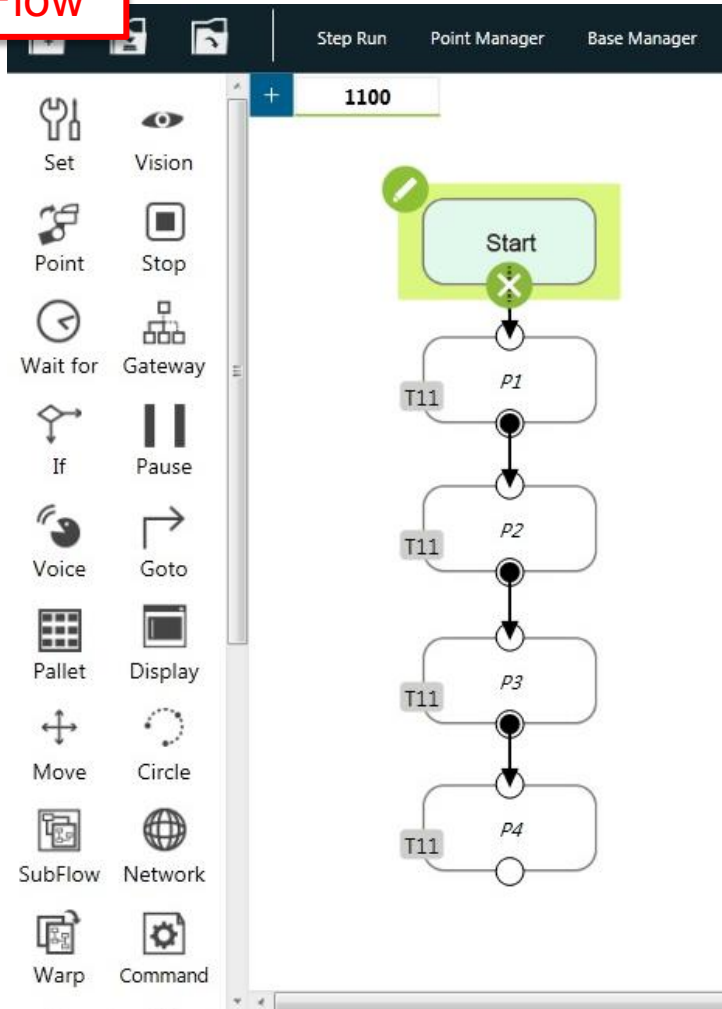
Flow



The screenshot shows the Point Manager dialog box. It has a title bar with 'Point Manager' and a close button. Below the title bar is a blue button labeled 'Add New Point'. Below that is a list of points: P1, P2, P3, and P4. The P1 row is highlighted in green. To the right of the list are sort icons: 'A Z' (up), 'Z A' (down), and 'P'. A red callout box points to the 'A Z' icon with the text: 'Click **A Z** points will sort by reverse order according to name'. At the bottom of the dialog box is a blue button labeled 'Move (+)' and a 'Speed' dropdown menu set to '1%'.

點位管理員


Flow



The 'Point Manager' dialog box has a title bar with a close button. It contains an 'Add New Point' button at the top. Below it is a list of points:

Point ID	Label	Action
P1	T11	>
P2	T11	>
P3	T11	>
P4	T11	>

At the top right of the list, there are icons for sorting: 'Z A', 'A Z', and a 'G' icon. A red dashed box highlights the 'G' icon. Below the list is a 'Move (+)' button and a 'Speed' dropdown menu set to '1%'.

Click  points will sort by order according to founded time

END