

IO initialization setting in Start node

Jennifer 2018.01.11₁V1.1

Translated by Jennifer 2018.01.23 V1.1

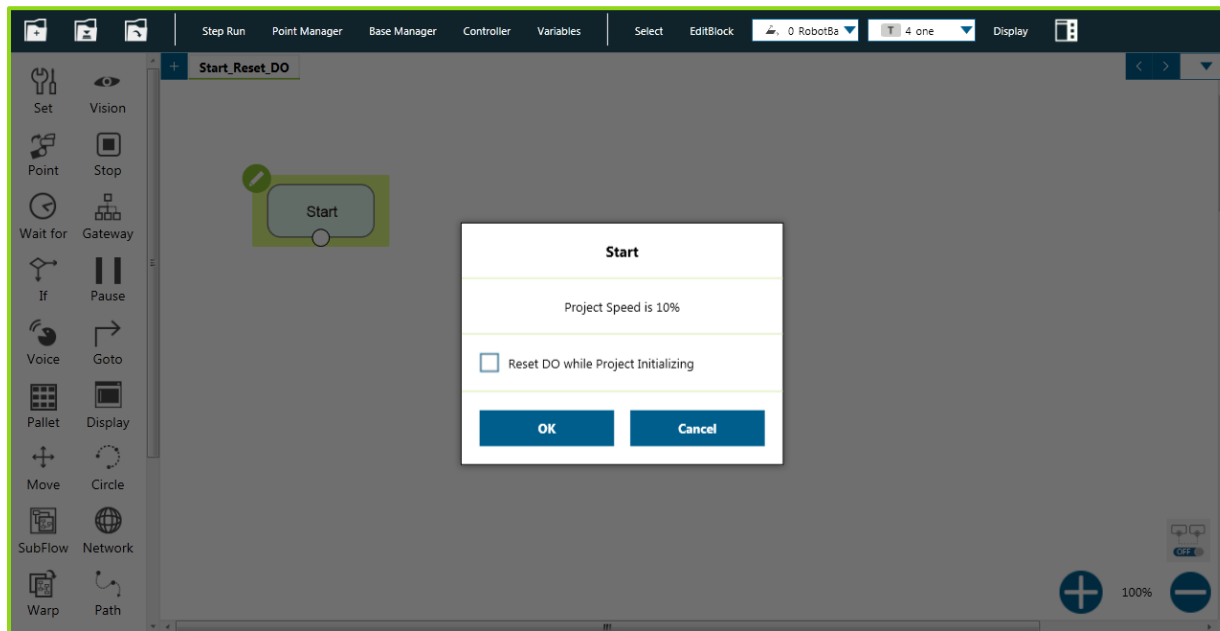
Introduction

➤ Purpose

User can choose whether to reset DO while project initializing or not.

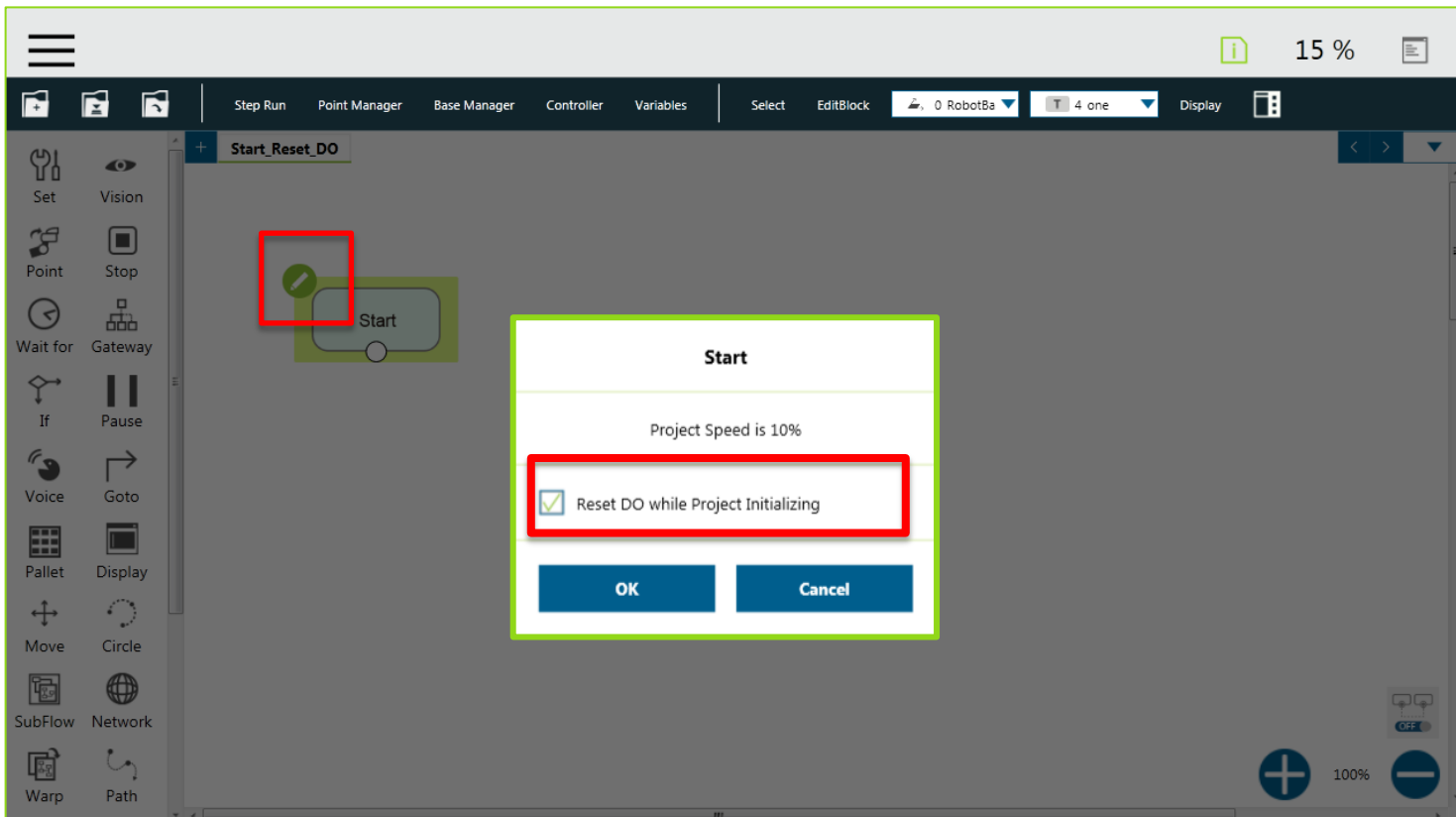
➤ Equipment

TM5 HMI 1.64.1010



Interface of I/O initialization setting

- Click pencil icon on start node to enter the editor.
- Choose whether to reset DO while project initializing or not.(Default setting is reset DO while project initializing.)





Thank You